

## Assessment of the gas turbine unit in Kirkuk gas power station using energy and exergy analysis

Sarah A. Salah<sup>1</sup>, Ehsan F. Abbas<sup>2</sup>, Obed M. Ali<sup>3</sup>

{[sarah.Ahmed1440@gmail.com](mailto:sarah.Ahmed1440@gmail.com)<sup>1</sup>, [ehsanfadhil@ntu.edu.iq](mailto:ehsanfadhil@ntu.edu.iq)<sup>2</sup>, [obedmajeed@gmail.com](mailto:obedmajeed@gmail.com)<sup>3</sup>}

Technical college Kirkuk, Northern Technical University, Kirkuk, Iraq<sup>1,2</sup>

Renewable Energy Research Unit, Northern Technical University, Kirkuk, Iraq<sup>3</sup>

**Corresponding author:** Sarah A. Salah, [sarah.Ahmed1440@gmail.com](mailto:sarah.Ahmed1440@gmail.com)

**Co-authors:** Ehsan F. Abbas: [ehsanfadhil@ntu.edu.iq](mailto:ehsanfadhil@ntu.edu.iq), Obed M. Ali: [obedmajeed@gmail.com](mailto:obedmajeed@gmail.com)

**Received:** 02-11-2021, **Accepted:** 19-12-2021, **Published online:** 02-02-2022

**Abstract.** The present study aims to evaluate and analyze the gas turbine power generation unit (K3) in the Kirkuk gas power station under actual weather conditions of (2017), which is located south of Kirkuk in the district of Taza. The (K3) unit has a production capacity estimated at (255 MW) at maximum load; the unit consists of a gas turbine and an air compressor connected to the generator via a common shaft and operates in the Joule-Brighton simple cycle. The current study dealt with the analysis of the energy and exergy for the mentioned unit based on the law of conservation of mass, the first law, the second law in terms of the influence of each of the factors (ambient temperature, compression ratio, and relative humidity). Two methods were used to simulate the working data; the first is simulation programming by Excel, and the other is by using CHEMCAD software; the average data have been used in the simulation process for each month in that year to evaluate the performance of the unit K3. The simulation results showed that the combustion chamber represents the most important part in the exergy destruction, and the largest energy rate can be obtained from fuel as chemical, and the results of both methods showed maximum energy and energy efficiency was around (37.67%) and (36.89%), respectively.

**Keywords:** Simple cycle , Gas turbine ,Energy analysis, Exergy analysis, Irreversibility.

### Nomenclature

B.W.R	Brick work ratio	$\eta_I$	Energy efficiency
CO	carbon dioxide	$\eta_{II}$	Exergy efficiency
CP	Specific heat, J/kg.K	<i>Subscripts</i>	
Ex	Exergy, W	a	Ambient
H	Enthalpy, J/kg	c	Compressor
G	Acceleration, 9.81 m/s <sup>2</sup>	CH	Chemical
JBC	Joule-Brighton cycle	cc	Combustion champer
KE	Kinetic energy, J	i	Inlet
LHV	Lower heating value, J	o	Out let
$\dot{m}$	Mass flow rate, kg/s	dec	Destructs
P	Pressure, Pa	KN	Kinetic
PE	Potential energy, J	PH	Physical
Rp	Pressure ratio	PT	Potential
RH	Relative humidity	T	Turbine
S	Entropy, KJ/k	T <sub>2</sub>	Compressor inlet temperature
T	Temperature, K	T <sub>3</sub>	Turbine inlet temperature

W	Work, W
V	Velocity, m/s
Z	Elevation, m

$T_4$  Turbine outlet temperature

## Introduction

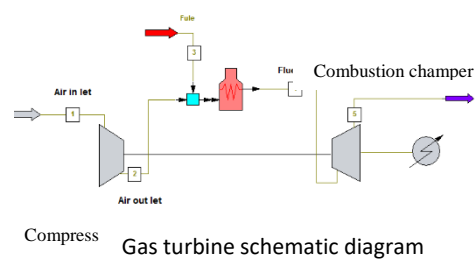
Because of the increasing population growth that has led to the rising need for energy all over the world and the rising need for safe access to it in the future, not only in domestic consumption but in the industrial and commercial sector and how to secure this energy, which includes the economic aspects and its impact on the environment, and not relying on fossil fuels like natural gas, coal, oil, ...etc.) because they cause pollution to the environment, which lead to global warming caused by an increase (CO). The search for alternative energy sources has become necessary at present, especially after the damage that fossil energy causes to the environment and its rising prices day after day. Benefiting from renewable energy has become a necessity, as many studies have been conducted to make the most of these sources, through the improvement and development of solar energy systems, wind energy, sub-earth energy ... etc., in order to improve their efficiency [1]. However, to this point, companies have not been able to provide renewable energy systems to generate electric power to meet the needs of the world, only a very small percentage, not exceeding 10% of the total need, for this reason, the interest in improving traditional electric generation systems that operate on fossil fuels is significant. Relying on thermal performance analysis is not an accurate measure to evaluate thermal systems because it accurately shows all the losses caused during power generation [2]. The second law determines the type and quantity of energy. It thus determines the amount of losses that can be reduced, or the so-called exergy analysis because it preserves mass and energy together and can improve and design energy for all systems (ROSEN, n.d). The goal of developing systems that use conventional fuels effectively, which are considered non-renewable resources, is to use available energy analysis because it is suitable to enhance the purpose. After all, it determines the actual size of losses, and this is useful in designing systems. It reduces the inefficiency of existing systems and thus reduces the cost [4], Because of the electrical energy crisis that the world is facing for several reasons, including the lack of rationalization in the use of electrical energy and other reasons, which prompted researchers to study generating stations in general and how to increase their efficiency and identify weaknesses that occur in the

system that affects the performance and life of the unit and affects the environment. Which leads to the weakening of its efficiency with the pass, so it was necessary to improve on the system by adding a specific part that was adding internal cooling, reheat, clamping CO<sub>2</sub>, hydro energy ..... etc. or take advantage of SE to heat the air entering the combustion chamber [5] or take advantage of the heat of the exhaust gas [6] for gas The turbine cycle or the simple cycle called (JBC) is open, the fuel is an essential part of any energy-producing system that includes solid fuels, liquid fuel, and gaseous fuel.

The research aims to study ambient temperature, compression ratio, and relative humidity parameters on the thermal energy and exergy of a gas power plant in 2017 under actual weather conditions. Both theoretical and software methods are used to simulate power plant working data.

## Modelling of the proposed system

The simulation was carried out on the working data of the gas turbine unit (K3) for 2017 based on the first and second laws of thermodynamics to determine the energy and exergy for each month, Fig. 1 shows the detailed sketch of the K3 unit and the arrangement of its components. First, started the energy simulation of the unit,



### 2.1 Energy Analysis

In order to analyze energy for the gas turbine unit, a set of assumptions are introduced so that the resulting mathematical model is simple enough for analysis:

- a. Gas turbine operated under steady-stated conditions.

- b. KE and PE effects are deprecated.
- c. Air and fuel are ideal gases. Fuel usage (dry gas), with LHV = (49383.738Kj/kg).
- d. The efficiency of gas turbines and generators is 98% and 97%, respectively.

Gas turbine energy analysis is done for each component according to Fig. 2, which represents its real cycle on the T-s diagram. The energy analysis sequence can be as follows:

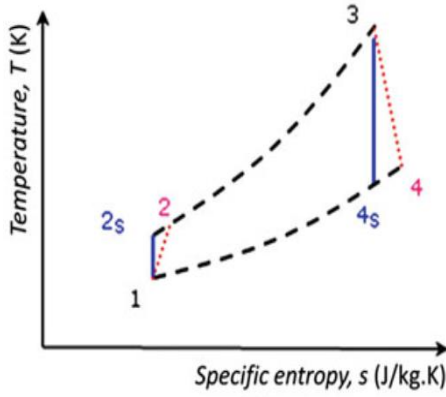


Fig.2. Real cycle of gas turbine unit [7]

A. Compressor work ( $W_c$ )

The amount of compressor work is calculated as follows [9]:

$$W_c = \dot{m} \bar{C}_{p,i} (T_2 - T_1) \quad (1)$$

where

$$\dot{m}_a = \dot{m}_i = \dot{m}_e \quad (2)$$

and

$\bar{C}_{p,i}$  is represented the products of a combustion chamber and is calculated as [9]:

$$\bar{C}_{p,i} = a_i + b_i T + c_i T^2 + d_i T^3 \quad (3)$$

The amount of heat added to the combustion chamber through the combustion of a mixture of fuel and air is calculated as [10]:

$$Q_{add} = \dot{m}_f \times LHV \quad (4)$$

B. Turbine Work ( $W_T$ )

Can express the work produced by the turbine as a result of the expansion of the combustion products through its blades [11]:

$$W_T = \dot{m}_g C_{p,g} (T_3 - T_4) \quad (5)$$

where

$$\dot{m}_g = \dot{m}_a + \dot{m}_f \quad (6)$$

C. Thermal efficiency ( $\eta_I$ )

The thermal efficiency of the thermodynamic cycle is defined as the ratio of the network produced by the turbine to the heat energy generated by the combustion process in the combustion chamber. It is expressed [10 and 12]:

$$\eta_I = \frac{W_{net}}{\dot{m}_f (LHV)} \quad (7)$$

D. Brake Work Ratio

The brake work ratio is defined as the ratio of thermal energy to the turbine work. It is expressed [13]:

$$B.W.R = \frac{W_c}{W_T} \times 100\% \quad (8)$$

E. Specific Fuel Consumption

Specific fuel consumption (SFC) is one of the essential matters when analyzing the energy and exergy for gas power stations because it represents a measure of the fuel consumed to generate energy for a certain period by a gas turbine [14]. It is defined as a ratio of fuel mass consumption ( $\dot{m}_f$ ) in one hour to a network ( $W_{net}$ ). The low values of (SFC) is indicated that the turbine works well [15]. Is calculated as [16 and 17]:

$$SFC = \frac{3600 \times \dot{m}_f}{W_{net}} \quad (9)$$

2.2 Exergy Analysis:

The exergy of the gas turbine power plant can be divided into four main types when the effect of each nuclear, electrical, surface tension and magnetic are neglected, where the total exergy is summarized as follows, [17] [18] [19]:

$$\dot{E}x = \dot{E}x_{CH} + \dot{E}x_{PH} + \dot{E}x_{KN} + \dot{E}x_{PT} \quad (10)$$

The amount of exergy to each part of the system the open cycle (JBC) is calculated as follows as [4] :

$$ex = (h_i - h_o) - T_a (s_i - s_o) + \frac{V^2}{2} + g z + ex_{CH} \quad (11)$$

As for the rate of exergy for  $\dot{m}$ , it is calculated through the following law [20] :

$$\dot{E}x = \dot{m} \times ex \quad (12)$$

$\dot{E}x_{PH}$  resulting from the change in the temperatures entering and exiting a system relative to the external environment, used for air, fuel and combustion gases, can be expressed in the following form [9] :

$$ex_{PH} = (h_i - h_i) - T_a (s_i - s_o) \quad (13)$$

To calculate the amount of  $\Delta S$  between two states entrance and exit in each process when imposing the specific entropy of an ideal gas as follows as [7] :

$$\Delta S = S_{i+1} - S_o = C_{p,i} \ln \left( \frac{T_{i+1}}{T_o} \right) - R \ln \left( \frac{P_{i+1}}{P_o} \right) \quad (14)$$

The  $\eta_{II}$  for each component can be expressed as [21]:

$$\eta_{II,C} = \frac{Ex_2 - Ex_1}{W} \times 100\% \quad \text{for comperssor} \quad (15)$$

$$\eta_{II,CC} = \frac{Ex_{flue\ gas}}{Ex_{flue} + Ex_{air}} \times 100\% \quad \text{for combustion chamber} \quad (16)$$

$$\eta_{II,T} = \left( 1 - \frac{Ex_{des,GT}}{Ex_3 - Ex_4} \right) \times 100\% \quad \text{for gas turbine} \quad (17)$$

and  $\eta_{II,cycle}$  is calculated from the following [22]:

$$\eta_{II,cycle} = \frac{W_{net}}{Ex_f} \times 100\% \quad (18)$$

where  $\dot{Ex}_{des}$  is determined as[23]:

$$\dot{Ex}_{des} = T_a \sigma_{cv} \quad (19)$$

and  $\dot{W}_{net,load}$  is [24 and 25]:

$$\dot{W}_{net,load} = (\dot{W}_{GT} - \dot{W}_{AC}) * (\eta_{generator} \times \eta_{mech}) \quad (20)$$

## Result and discussion

Simulation of working data gas turbine (K3) was conducted for twelve months in 2017 with both methods. It includes energy and exergy changes by ambient temperature, compression ratio, and relative humidity. First, we discuss the effect of these parameters on the energy production behaviour:

### 3.1 Effect of change in ( $T_a$ , $rp$ , $RH$ ) on $\eta_I$ :

Figures 3 to 5 show the result of studying  $T_a$ ,  $rp$ , and  $RH$  parameters on the  $\eta_I$ , respectively, based on average data for each month. Fig. 3 indicated that the change in a  $T_a$  has more influence on the performance of the unit; their maximum  $\eta_I$  obtained at  $T_a$  equal to 19.39 C, which was around 37.67%, where it was less than the design  $\eta_I$ , which ranges between 38 to 40% when it measured at a standard condition ( 1 bar and 15 °C) [26]. The value of  $T_1$  is affected by the fluctuation in  $T_a$ . From which the efficiency of the cycle is determined, where  $T_1$  is inversely proportional to the  $\eta_I$ , but this does not mean that it must be at a freezing point or well below the design temperature (15 °C), because as we indicated earlier the best  $\eta_I$  of the unit was found when tested At standard temperatures, this result is in agreement with references [27, 28]. Also, Figure 2 indicates that  $rp$  and  $RH$  affect the  $\eta_I$  values, regardless of the air temperature, as shown in Figs 4 and 5, where the average temperature for March and December was equal and estimated at 14.34°C. Still, the efficiency did not be identical because of the difference in  $rp$  and  $RH$  in each month, where the value of  $rp$  and  $RH$  were 15.7 and 23%, respectively, while 16.5 and 30% in December. However, the efficiency of the unit in December was higher than in March.

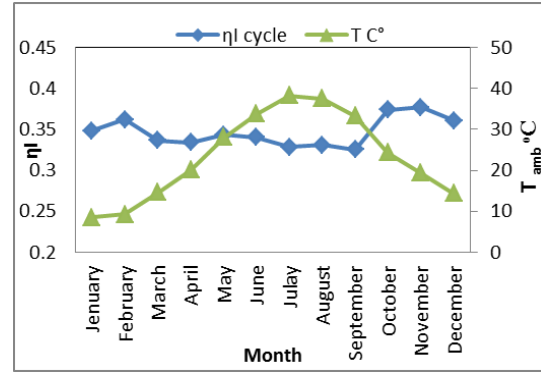


Fig.3. Effect of ambient temperature on thermal efficiency

Figure 4 shows the effect of  $rp$  on the overall thermal efficiency for one year of unit operation and indicates that  $rp$  is inversely related to unit efficiency, where an increase in  $rp$  leads to a decrease in  $\eta_I$ , until September, where after this month the  $\eta_I$  was increased with an increase in  $rp$ . Due to the rise in the relative humidity of the air, this result agrees with the results of references [29-32].

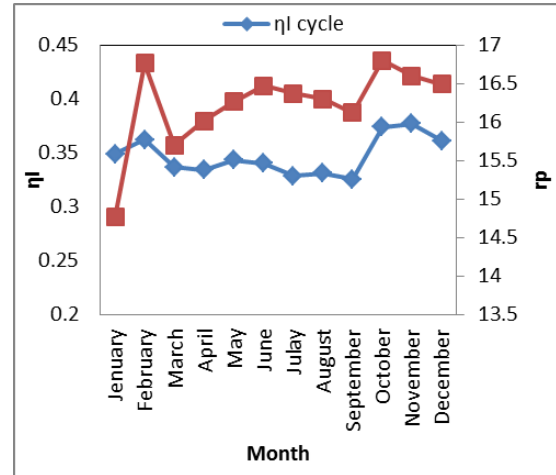


Fig.4. Effect of compression ratio on thermal efficiency

The effect of change in  $RH$  on the compressor work was little on the unit  $\eta_I$ , as shown in Fig.5 compared to the other parameters. Stabilised almost the  $RH$  in the hot climate, where it has fluctuated in narrow ranges from May to September, but efficiency decreased in this period due to  $T_a$  rising. In the case of low  $RH$ , the gas turbine efficiency can be improved by adding a humidifier system to humidify the inlet air to the compressor.

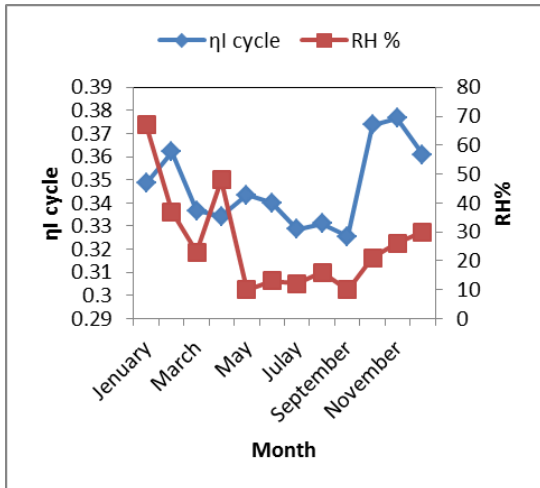


Fig.5. Effect of relative humidity on thermal efficiency

3.2 Effect of change in  $T_a$  and  $r_p$  on the exergy efficiency :

The results of exergy analysis of the gas turbine unit K3 crossed Figs 6 to 8, which show the effect of both parameters  $T_a$  and  $r_p$  on the efficiency of the  $\eta_{II}$ . Fig. 6 shows that the ambient temperature strongly impacts the  $\eta_{II}$ ; Overall results showed that the maximum  $\eta_{II}$  was obtained in November; it was about 37% when  $T_a$  was 19.39°C. The minimum was obtained in September, ranging from 31 to 31.5%. Fig.6 indicates lower exergy efficiency obtained in higher  $T_a$ . Also, it gets less than the standard temperature of 15 °C. Fig.5 indicates lower  $\eta_{II}$  obtained in higher  $T_a$ . Also, it gets less than the standard temperature of 15 °C and this is consistent with most researchers [39] [40] [41]

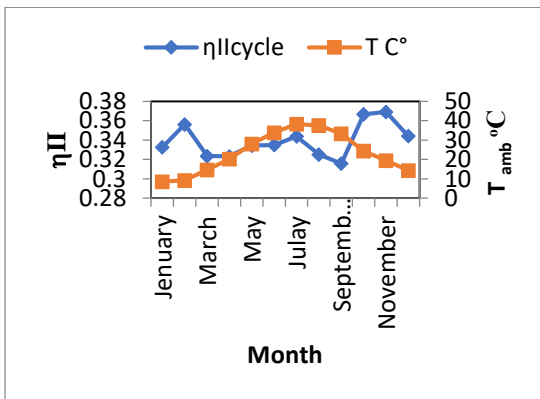


Fig.6. Effect of ambient temperature on exergy efficiency

The results showed the effect of ( $r_p$ ) for a year on  $\eta_{II}$ , as found that the maximum  $\eta_{II}$  was (36.89%) for November, where the ( $r_p$ ) was approximately (16.6), while the highest ( $r_p$ ) was at November (16.80) and ( $\eta_{II}$ ) was (36.65%) with a difference of (0.24), while ( $\eta_{II}$ ) was at the lowest value of ( $r_p$ ), which amounted to (14.76), and  $\eta_{II}$  was found to be (30.73%) for December as shown in Fig. 6, and this is consistent with most of the previous studies [42][43][44], who indicated that the ( $r_p$ ), the greater ( $\eta_{II}$ ). As for the researcher, [25] showed that

( $\eta_{II}$ ) increases by (6%) when ( $r_p$ ) increases by (5%) but starts to decline after that, as the efficiency decreases by (0.04) if ( $r_p$ ) increases by (7%), and  $\eta_{II}$  increases with ( $r_p$ ). The efficiency decreases again with a decrease in ( $r_p$ ).

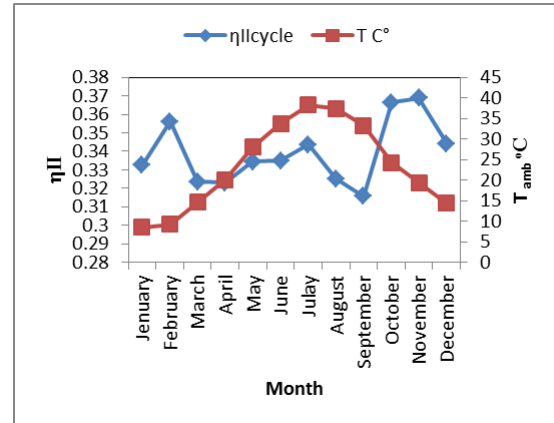


Fig.7. Effect of compression ratio on thermal efficiency

Figure 8 notes from the results that RH has an apparent effect on  $\eta_{II}$ , as the maximum exergy efficiency reached at November (36.89%) at (RH 16%), while the lowest  $\eta_{II}$  at the highest percentage of RH of the month was as (RH 67%) (30.73%), and  $\eta_{II}$  at the lowest value of RH for May and September was (33.42%), while it was (31.56%) in September. This confirms that  $\eta_{II}$  decreases with increasing RH.

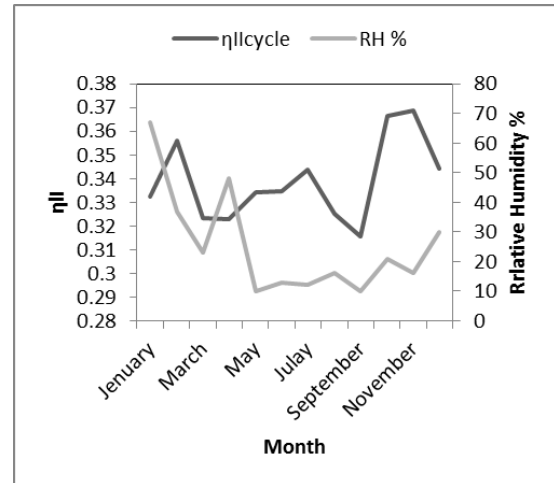


Fig.8. Effect of relative humidity on exergy efficiency

3.3 Results amount of exergy and exergy destroyed:

Through the results obtained, the highest rate of exergy that we can get from fuel because of the enormous energy stored in the fuel ( $\dot{E}x_{CH}$ ) ( $Ex_{fuel}$  (1003.598 MW) ), followed by the gases coming out of (CC) ( $Ex_3$ ) (789.861MW) , (AC) ( $Ex_2$ ) by (229.3101MW)), gases introduced to the atmospheric air from (GT) ( $Ex_4$  198.2518MW) (respectively, as shown in Fig .9.

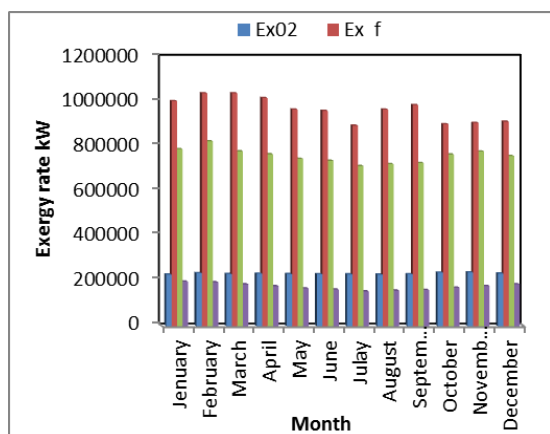


Fig.9. Exergy simulation of unit components over one year

As for the rate of (Ex,des), it was found that (CC) occupied the first place for the processes of destruction of exergy due to the irreversible processes that occur in the (CC) (chemical reactions) as indicated by most researchers [17] [45] [46], where Ex des, CC reached (443.0382 MW), While the two studies [47] [48] showed that (Ex,des) occurs in the exhaust gas and then (CC), Then (AC) Ex des, AC (36.0847MW), then (GT) Ex des, GT, (7.6862MW) as shown in Fig.10.

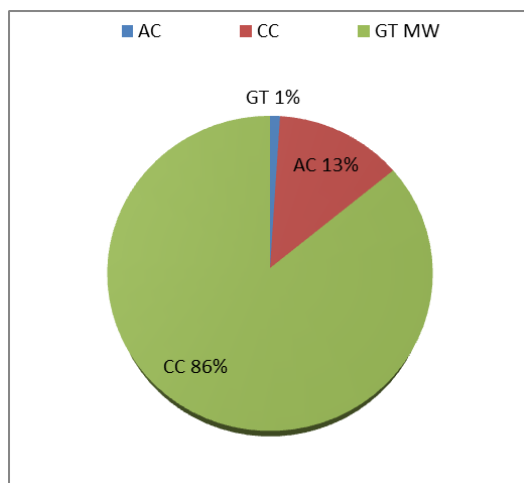


Fig.10. The rate of exergy losses in the cycle process

## Conclusion

Conducted an analysis of the energy and exergy to the power plant in order to determine the losses caused by it in actual working conditions, in addition to studying the effect of external factors on the performance of the system and the specific rate of fuel consumption, which includes ( $T_a$ , RH,  $r_p$ ). The results of the operation of this system showed several conclusions, namely:

1. Ambient temperature has a noticeable effect on the unit's efficiency, as the efficiency decreases with increasing  $T_a$ .
2. Efficiency is increased with increase ( $r_p$ ).
3. Maximum exergy distortion was obtained in the combustion chamber due to irreversible processes

followed by compressor and gas turbine, respectively..

4. Higher ambient temperature increases specific fuel consumption. Thus it economically affects the price of power production.

## References

- [1] <http://dspace.univ-setif.dz:8888/jspui/handle/123456789/3253>.
- [2] S. C. Kaushik, V. S. Reddy, and S. K. Tyagi, "Energy and exergy analyses of thermal power plants: A review," *Renew. Sustain. Energy Rev.*, vol. 15, no. 4, pp. 1857–1872, 2011, doi: 10.1016/j.rser.2010.12.007.
- [3] I. D. & M. A. ROSEN, *Exergy, Energy Environment And Sustainable Development*.
- [4] M. J. Moran and E. Sciubba, "Exergy analysis: Principles and practice," *J. Eng. Gas Turbines Power*, vol. 116, no. 2, pp. 285–290, 1994, doi: 10.1115/1.2906818.
- [5] J. Wang, Z. Lu, M. Li, N. Lior, and W. Li, "Exergy and exergoeconomic analyses of a novel integration of a 1000 MW pressurized water reactor power plant and a gas turbine cycle through a super heater," *Energy*, vol. 175, pp. 1246–1258, 2019, doi: 10.1016/j.energy.2019.03.147.
- [6] M. J. Ebadi and M. Gorji-Bandpy, "Exergetic analysis of gas turbine plants," *Int. J. Exergy*, vol. 2, no. 1, pp. 31–39, 2005, doi: 10.1504/IJEX.2005.006431.
- [7] A. P. Teixeira and C. Guedes Soares, *Thermal Power Plant Performance Analysis*. 2012.
- [8] J. Sarkar and S. Bhattacharyya, "Application of graphene and graphene-based materials in clean energy-related devices Minghui," *Arch. Thermodyn.*, vol. 33, no. 4, pp. 23–40, 2012, doi: 10.1002/er.
- [9] R. E. Sonntag, Claus Borgnakke, and Gordon J. Van Wylen, "Fundamentals of Thermodynamics (6th edition)-Solution manual," 2009.
- [10] F. I. Abam, I. U. Ugot, and D. I. Igbong, "Thermodynamic Assessment of Grid-Based Gas Turbine Power Plants in Nigeria," vol. 2, no. 6, pp. 1026–1033, 2011.
- [11] T. D. Eastop and A. McConkey, "Applied Thermodynamics." pp. 439–454, 2019.
- [12] G. Fellah and K. Ben Noba, "Thermodynamic Analysis of Zawia Combined Cycle Power Plant," *Int. J. Eng. Pap.*, vol. 1, no. January, pp. 74–81, 2016, [Online]. Available: <http://scigatejournals.com/publications/index.php/ijep%0AThermodynamic>.
- [13] M. J. Moran et al., *Introduction to Thermal Systems Engineering : and Heat Transfer*.
- [14] S. de Oliveira, *Exergy: Production, cost and renewability*, vol. 63. 2013.
- [15] S. H. Danook, "Thermal performance for electricity generation plant of North Oil Company Kirkuk," pp. 19–21.
- [16] M. Saif and M. Tariq, "Thermal Analysis of a Gas Turbine Power Plant at Uran, India \* Er. Mohd. Saif and Dr. Mohammad Tariq," no. March 2014, 2018.



- [17] Y. H. Hussein, "Exergy destruction calculation in gas turbine power plant and showing the effect of ambient temperature on it Al-Kitab Journal for Pure Science," vol. 2, no. 2, pp. 278–292.
- [18] T. J. Kotas, "Review of the fundamentals," *Exergy Method Therm. Plant Anal.*, pp. 1–28, 1985, doi: 10.1016/b978-0-408-01350-5.50008-8.
- [19] Maiti and Bidinger, *The Exergy Method of Thermal Plant Analysis*, vol. 53, no. 9. 1981.
- [20] Y. A. C. & M. A. BOLES, *Thermodynamics An Engineering Approach*.
- [21] E. F. Kreith, B. Raton, C. R. C. Press, and M. J. Moran, "Engineering Thermodynamics," 1999.
- [22] M. Fallah, H. Siyahi, R. A. Ghiasi, S. M. S. Mahmoudi, M. Yari, and M. A. Rosen, "Comparison of different gas turbine cycles and advanced exergy analysis of the most effective," *Energy*, vol. 116, pp. 701–715, 2016, doi: 10.1016/j.energy.2016.10.009.
- [23] Y. Zhang, *Book Review: Fundamentals of Engineering Thermodynamics*, vol. 29, no. 1. 2001.
- [24] Y. A. Cengel and M. A. Boles, "Thermodynamics: An Engineering Approach - Manual de Respostas," pp. 1–33, 1991.
- [25] F. I. Abam, I. U. Ugot, and D. I. Igbong, "Effect of Operating Variables on Exergetic Efficiency of an Active Gas Turbine Power Plant," *J. Emerg. Trends Eng. Appl. Sci.*, vol. 3, no. 1, pp. 131–136, 2012.
- [26] "Ch1 introduction.pdf."
- [27] C. O. . Oko and O. . Akpan, "Exergy analysis of a gas turbine power plant," *J. Model. Des. Manag. Eng. Syst.*, vol. 5, no. 1, pp. 3991–3993, 2010, doi: 10.4314/jmdmes.v5i1.55059.
- [28] Thamir.B.Awad, "Thermal performance of gas turbine power plant based on exergy analysis Thamir K. Ibrahim a,fl, Firdaus Basrawi a, Omar I. Awad a, Ahmed N. Abdullah c, G. Najafi b, Rizlman Mamat a, F.Y. Hagos a," *E3S Web Conf.*, vol. 128, pp. 977–985, 2019, doi: 10.1051/e3sconf/201912801027.
- [29] M. Khaljani, R. Khoshbakhti Saray, and K. Bahlouli, "Comprehensive analysis of energy, exergy and exergo-economic of cogeneration of heat and power in a combined gas turbine and organic Rankine cycle," *Energy Convers. Manag.*, vol. 97, pp. 154–165, 2015, doi: 10.1016/j.enconman.2015.02.067.
- [30] J. Sarkar and S. I. research 6/C E. analysis of a coal-based 210 M. thermal power plant. pd. Bhattacharyya, "Analysis of parameters affecting the performance of gas turbines and combined cycle plants with vapor absorption inlet air cooling," *Arch. Thermodyn.*, vol. 33, no. 4, pp. 23–40, 2012, doi: 10.1002/er.
- [31] T. K. Ibrahim and M. N. Mohammed, "Thermodynamic Evaluation of the Performance of a Combined Cycle Power Plant," *Int. J. Energy Sci. Eng.*, vol. 1, no. 2, pp. 60–70, 2015, [Online]. Available: <http://www.publicscienceframework.org/journal/ijese>.
- [32] B. EH, F. S, and A. B, "Exergy Analysis for Brayton and Inverse Brayton Cycles with Steam Injection," *J. Appl. Mech. Eng.*, vol. 06, no. 06, 2017, doi: 10.4172/2168-9873.1000292.
- [33] K. A. B. Pathirathna, "Gas Turbine Thermodynamic and Performance Analysis Methods Using Available Catalog Data," no. October, p. 101, 2013.
- [34] A. K. Mohapatra and Sanjay, "Thermodynamic assessment of impact of inlet air cooling techniques on gas turbine and combined cycle performance," *Energy*, vol. 68, pp. 191–203, 2014, doi: 10.1016/j.energy.2014.02.066.
- [35] A. Poullikkas, "An overview of current and future sustainable gas turbine technologies," *Renew. Sustain. Energy Rev.*, vol. 9, no. 5, pp. 409–443, 2005, doi: 10.1016/j.rser.2004.05.009.
- [36] M. N. Eke, E. C. Okoroigwe, S. I. Umeh, and P. Okonkwo, "Performance Improvement of a Gas Turbine Power Plant in Nigeria by Exergy Analysis: A Case of Geregu 1," *OALib*, vol. 07, no. 09, pp. 1–20, 2020, doi: 10.4236/oalib.1106617.
- [37] M. M. Alhazmy and Y. S. H. Najjar, "Augmentation of gas turbine performance using air coolers," *Appl. Therm. Eng.*, vol. 24, no. 2–3, pp. 415–429, 2004, doi: 10.1016/j.applthermaleng.2003.09.006.
- [38] D. Borcard, F. Gillet, and P. Legendre, *Second Edition Second Edition*, no. June. 2001.
- [39] W. Hussein, W. Hussein, and A. Doori, "Exergy Analysis of a Gas Turbine Performance With Effect Cycle Exergy Analysis of a Gas Turbine Performance With," no. October 2012, 2014.
- [40] T. K. Ibrahim *et al.*, "Thermal performance of gas turbine power plant based on exergy analysis," *Appl. Therm. Eng.*, vol. 115, pp. 977–985, 2017, doi: 10.1016/j.applthermaleng.2017.01.032.
- [41] A. Haouam, C. Derbal, and H. Mzad, "Thermal performance of a gas turbine based on an exergy analysis," *E3S Web Conf.*, vol. 128, pp. 1–5, 2019, doi: 10.1051/e3sconf/201912801027.
- [42] M. Ameri and N. Enadi, "Thermodynamic modeling and second law based performance analysis of a gas turbine power plant ( exergy and exergoeconomic analysis )," *J. Power Technol.*, vol. 92, no. 3, pp. 183–191, 2012.
- [43] M. A. Javadi, S. Hoseinzadeh, M. Khalaji, and R. Ghasemiasl, "Optimization and analysis of exergy, economic, and environmental of a combined cycle power plant," *Sadhana - Acad. Proc. Eng. Sci.*, vol. 44, no. 5, pp. 1–11, 2019, doi: 10.1007/s12046-019-1102-4.
- [44] M. Javadi, "Thermodynamics Analysis and Optimization of Abadan Combined Cycle Power Plant," no. July 2019, 2016, doi: 10.17485/ijst/2016/v9i7/87770.
- [45] A. A. A. Abuelnuor, K. M. Saqr, S. A. A. Mohieldein, K. A. Dafallah, M. M. Abdullah, and Y. A. M. Nogoud, "Exergy analysis of Garri '2' 180 MW combined cycle power plant," *Renew. Sustain. Energy Rev.*, vol. 79, no. May, pp. 960–969, 2017, doi: 10.1016/j.rser.2017.05.077.
- [46] S. O. Oyedepo, R. O. Fagbenle, S. S. Adefila, and M. M. Alam, "Exergoeconomic analysis and performance assessment of selected gas turbine power plants," *World J. Eng.*, vol. 12, no. 3, pp. 283–300, 2015, doi: 10.1260/1708-5284.12.3.283.
- [47] S. Adumene, "Load-based Exergetic Assessment of an Offshore Thermal Power Plant in an Equatorial Environment," *Stud. Eng. Technol.*, vol. 3, no. 1, p.

19, 2015, doi: 10.11114/set.v3i1.1177.

- [48] A. H. Ahmed, A. M. Ahmed, and Q. Y. Hamid, "Exergy and energy analysis of 150 MW gas turbine unit: A case study," *J. Adv. Res. Fluid Mech. Therm. Sci.*, vol. 67, no. 1, pp. 186–192, 2020.